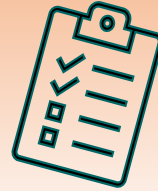




ASPIRE Monthly Webinar
Wednesday January 26th 3-4pm ET
TOPIC: Consenting for ASPIRE

Zoom: 204 114 0507 Passcode: aspire



ASPIRE Participants
59

Recruitment Update

Since Last Newsletter...

Consents	6	Randomizations	4
Beth Israel Deaconess	1	Harborview Medical Center	1
Harborview Medical Center	1	Moses H. Cone Memorial Hospital	1
Hospital of the University of Pennsylvania	1	University of Chicago Medical Center	1
Moses H. Cone Memorial Hospital	1	Wake Forest Baptist Medical Center	1
UH Cleveland Medical Center	1		
Yale New Haven Hospital	1		

Congratulations for 1st Randomizations!



Pramod Sethi (PI), Jamil Ahmed (SC), Rizwan Sabir (PSC), Glynda Reaves (SC), Zule Huma (SC) (left to right)



Scott Mendelson (PI)



Mariel Dronson (PSC)



Emma Hall (SC)



Elisheva Coleman (SUB-I)



James Brorson (SUB-I)



Shyam Prabhakaran (SUB-I)

New Sites Released to Enroll

Cox Medical Center South, Springfield, MO	Benjamin Lisle (PI), Jessica Ratcliff (PSC)
Danbury Hospital, Danbury, CT	Charles Guardia (PI), Michael Camussi (PSC)

---ANNOUNCING ---

ASPIRE GWTG-Stroke Super User Project



Goal: To enhance quality improvement activities at sites to optimize patient screening.

Methods: Sites are asked to grant the ASPIRE PIs access to their hospital’s GWTG-Stroke data following established AHA procedures for allowing such access to outside entities (so-called ‘super users’). Once designated as superusers, the ASPIRE PIs will be able to query the GWTG-Stroke registry to review deidentified data on patients admitted with ICH. This review will be performed solely for the purpose of supporting recruitment for ASPIRE and the results will be shared only with the investigators at the participating site. No site-identifying performance or quality measure data will be made public or published.

Pilot Experience: In November ‘21, 22 sites were sent invitations to join the project. To date, 3 have joined, 13 are in the process of joining, 3 have not yet responded, and 3 declined to participate.

Main Phase: In February, AHA will send invitations to all other enrolling sites in our network.

We hope you will be able to help us with this project - both to enhance and validate your screening efforts, and to provide StrokeNet with important information on the utility of this type of collaboration for other trials.

Update: ASPIRE Participants (n=59)		
Male	37	63%
Age, yrs, mean (±sd)	72 (±8)	
White	47	80%
Black/African American	6	10%
Asian	2	3%
Other/multiple	4	7%
Hispanic ethnicity	4	7%
Lobar ICH	17	29%
ICH volume, median (IQR)	5.0 (2.5, 13.1)	
mRS 0-2	21	37%
3-4	31	61%
5	1	3%
<i>Missing: Ethnicity (1); mRS (2); ICH volume (6)</i>		

In comparison, a GWTG report of all patients admitted with ICH and Afib in 2020 at 125 ASPIRE sites found that 12% were Black/AA, 5% were Asian, and 6% were Hispanic.

We are pleased to see that the demographics of our enrolled subjects are similar to those of admitted patients as we work to meet one goal of health equity which is to “... ensure that recruited populations reflect the diversity of the populations affected by the studied condition.” [Boulware et al, NEJM, 2022].

Question Corner

What are some best practices for maintaining communication with enrolled subjects?

The ASPIRE informed consent includes language stating that researchers may contact people designated by the subject in case they are not available for a follow-up contact. These contacts can be useful in reaching subjects or getting new contact information for them.

- Ask for contact information (*name/relationship/phone/email*) for at least 3 alternate contacts, such as relatives, friends, or caregivers.
- Approvals to contact the subject's HCPs should also be requested.
- Be sure the subject/family has your contact information.
- Remind them to let you know of any phone number, address, or health changes.

In addition, the subject/LAR should be asked to sign your site's institutional release of information or ASPIRE Medical Record Release form at consent and periodically during participation. This permission to obtain records may be needed if a subject is admitted to a non-study center for a potential outcome event.

ASPIRE Delegation of Authority Log



Reminder

If there are any changes in ASPIRE **personnel, roles, responsibilities, or email addresses**, please update your DOA in WebDCU.

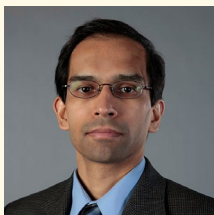
NCC and StrokeNet Pharmacy use the current DOA to send sites important notifications.

Thank You!

Study News

We are excited to announce an important collaboration with the cardiology community.

Dr. Deepak Bhatt, an international leader in interventional cardiology, has joined the ASPIRE Steering Committee.



Deepak L. Bhatt, MD, MPH
Professor, Harvard Medical School
Director, Interventional Cardiovascular Programs

Please plan to attend the ASPIRE Monthly Webinar on **March 9th** when Dr. Bhatt will discuss the **role of LAA closure in patients with ICH.**

Site Enrollment by Year

2 2 2
0 0 0
2 2 2
0 1 2

2 2 2
0 0 0
2 2 2
0 1 2

2 2 2
0 0 0
2 2 2
0 1 2

Case Western			
Akron General			
Cleveland Clinic			
MetroHealth			
Riverside Methodist	*		
UH Cleveland			
WVU Healthcare Ruby Memorial			
Columbia			
Buffalo General			
Kings County	*		
NYP Columbia	*		
NYP Weill Cornell			
NewYork-Presbyterian Brooklyn			
SUNY Upstate			
Strong Memorial Hospital			
Emory			
Grady Memorial Hospital	*		
MUSC			
Augusta University			
MUSC			
Moses H. Cone			
Prisma Health Greenville			
Mass General			
Baystate	*		
Beth Israel Deaconess			
Boston Medical Center	*		
Lahey Hospital & Medical Center	*		
Massachusetts General			
The University of Vermont			
Tufts	*		
MedStar			
MedStar Georgetown			
MedStar Washington			
UVA			
Mount Sinai			
Maimonides			
Montefiore			
NYU Langone Hospital - Brooklyn			
Non Network			
Javon Bea Hospital - Riverside	*		
St. John's Hospital	*		
University of North Carolina	*		
Vassar Brothers	*		
Stanford			
Mercy San Juan			
OHSU Hospital			
Providence St. Vincent			
Stanford University			
*=Site Not Activated; # Randomized =	1	2	3

U Chicago			
Central DuPage			
Froedtert Hospital	*		
Loyola University			
NCH Hospital			
Rush University			
University of Chicago			
University of Illinois			
U Cincinnati			
OSU Wener			
University of Cincinnati			
University of Louisville			
U Iowa			
University of Iowa			
University of Nebraska	*		
U Miami			
Jackson Memorial			
Mayo Clinic			
Tampa General			
U Michigan			
Henry Ford			
McLaren Flint	*		
McLaren Macomb			
Mercy Health Saint Mary's			
Metro Health			
University of Kentucky			
University of Michigan			
U Minnesota			
Abbott Northwestern			
HealthPartners Methodist	*		
Regions Hospital	*		
St. Cloud Hospital	*		
University of Minnesota			
U Penn			
Abington Memorial Hospital			
Hospital of U of Pennsylvania			
Lehigh Valley - Cedar Crest	*		
Temple University	*		
Thomas Jefferson	*		
U Pitt			
UPMC Presbyterian			
U Utah			
Banner University - Tucson Campus	*		
St. Mary's			
University of Utah			
U Washington			
Harborview			
PeaceHealth Sacred Heart - RiverBend			
Virginia Mason	*		

UAB			
University of Alabama			
University of Mississippi			
University of South Alabama			
UCLA			
Arrowhead Regional			
Cedars-Sinai			
Hoag Hospital Newport Beach			
Huntington Memorial	*		
Kaiser Permanente Fontana			
Kaiser Permanente Los Angeles			
Long Beach Memorial			
Los Alamitos	*		
PIH Health Hospital - Whittier			
Rancho Los Amigos			
Ronald Reagan UCLA			
UC Davis	*		
UC Irvine			
University of New Mexico			
UCSD			
Chandler Regional			
Desert Regional	*		
Ochsner - Main Campus			
UCSF			
Kaiser Permanente Sacramento			
San Francisco General			
The Queen's Medical Center	*		
UTHSC Houston			
Baylor			
Houston Methodist Hospital	*		
Memorial Hermann Texas	*		
OU			
St. David's			
UT Southwestern			
UT Health Science Center San Antonio			
Wake Forest			
Carolinas	*		
Wake Forest Baptist			
Washington University			
Barnes Jewish Hospital			
Cox South	*	*	
Methodist University Hospital	*		
OSF St. Francis			
UAMS			
Yale			
Hartford Hospital			
North Shore University Hospital			
Rhode Island Hospital			
Yale New Haven Hospital			

ASPIRE CONTACT INFORMATION

ASPIRE@YALE.EDU 24/7 Hotline: (800) 618-0643

Principal Investigators

Kevin Sheth (443) 615-4729; Hooman Kamel

Program Managers

Laura Benken [NCC] (513) 558-3925; Catherine Viscoli [Yale] (203) 927-0443