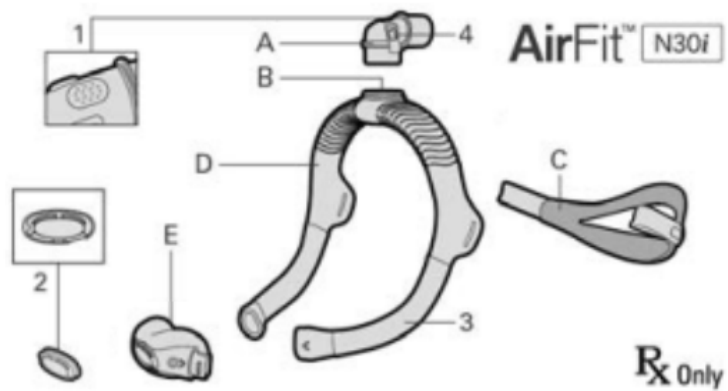


## AirFit N30i Nasal Mask

This under-the-nose “nasal cushion” or “nasal cradle” mask is popular for its simplicity and comfort. The cushion is made of a thin silicone that gently cradles the nose just under the nostrils. The more structured frame to which the silicone is attached helps to assure a stable seal.

Sizing is based on an assessment of the subject’s nares using a printed-out copy of the fitting guide. To determine the fit, use the printed guideline (provided at the end of this document) and see which of the sizes most closely matches the distance between the outer edges of the nares. The perfect fit will allow the cushion to gently cradle the nose without significant excess around the edge of the nares.



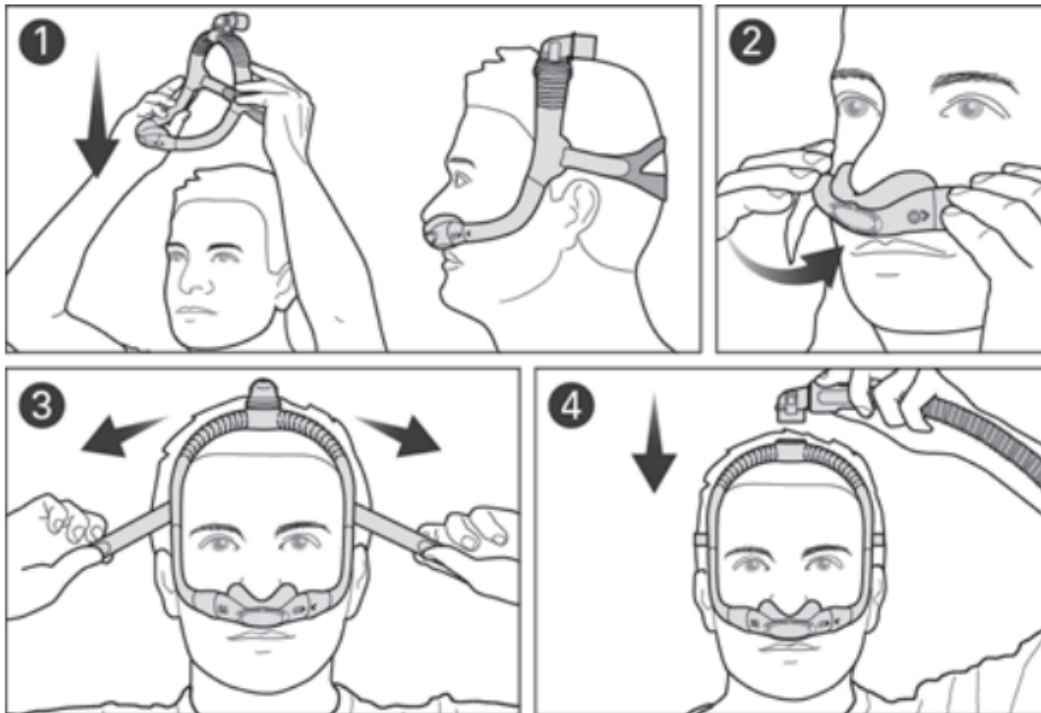
- |   |                    |   |               |
|---|--------------------|---|---------------|
| A | Elbow              | 1 | Vent          |
| B | Elbow ring         | 2 | QuietAir vent |
| C | Headgear           | 3 | Sleeve        |
| D | Frame              | 4 | Side buttons  |
| E | N30i nasal cushion |   |               |

## Fitting

1. Pull the frame (plastic component, D) and headgear (elastic strap, C) over the head until the elbow (where the tube from the CPAP machine will attach) is positioned on top of the head and the adjustable strap is behind the head. The standard size headframe will fit most participants. The ridges in the frame allow it to automatically adapt to the user's head size. If the mask frame (D) falls back over the head or sits too close to the ears, try a small frame.
2. Place the cushion under the nose, making sure that the opening will allow air to be delivered into the nostrils.
3. Tighten or loosen the headgear using the velcro straps (C) until the cushion fits comfortably but snugly under the nose.
4. Squeeze the side buttons on the elbow and detach from the frame. Connect the air tubing from the device to the elbow, then reattach the elbow to the frame.

### Adjusting the mask

- When using the mask, air will flow out of the vents at the front of the cushion and at the elbow. If air leaks inadvertently in addition from the side or top of the cushion where it should seal with the skin, adjust the mask fitting to improve the seal.
- You can position the top of the frame forward or backwards over the head until the mask feels comfortable.



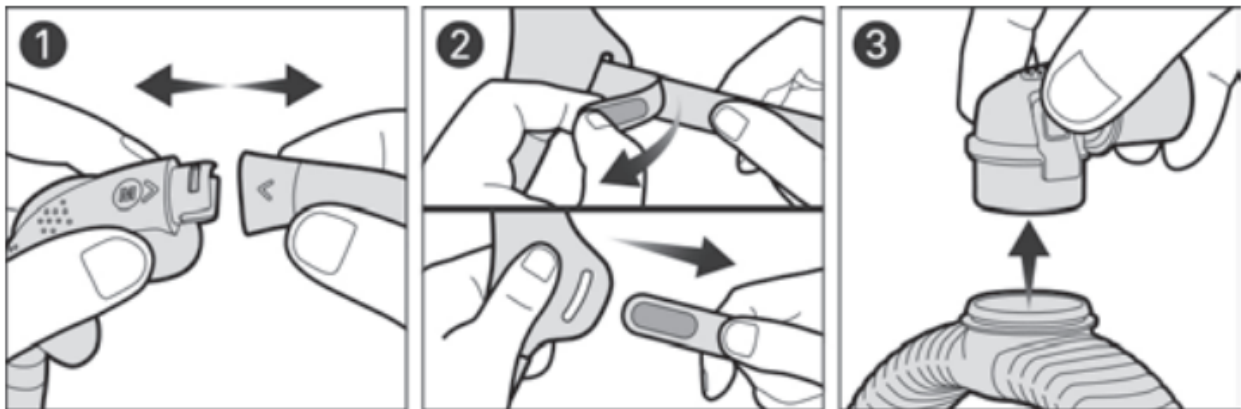
## Tips

- A. If the strap is touching the ear, adjust the strap on the back of the head until it is level with the eyebrows and then gently tighten to keep it in place.
- B. If leaks are experienced, pull the mask forward until it no longer touches the face, and then place it back down.

## Removal

To take the mask off, simply undo the back strap and then lift the cushion away from the face and over the head. As an alternative, the strap can be left attached, and at the correct velcro-adjusted length, for quickly putting on and taking off the mask: just pull the mask forward away from the nose, and lift it upwards to remove it with the headgear as well.

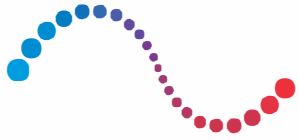
## Disassembly



1. Pull the cushion from the frame.
2. Undo the fastening tabs on the headgear strap and pull it from the frame.
3. Squeeze the side buttons on the elbow and detach from the frame.

## Reassembly

1. Squeeze the side buttons of the elbow, line it up inside the frame, and then let go of the side buttons, allowing it to click in.
2. Thread the fastening tabs through the slits on the headgear strap and velcro them together.
3. Click the cushion into the frame on both sides.



**ResMed**

Actual Size: 140 mm (Width)  
x 175 mm (Height)

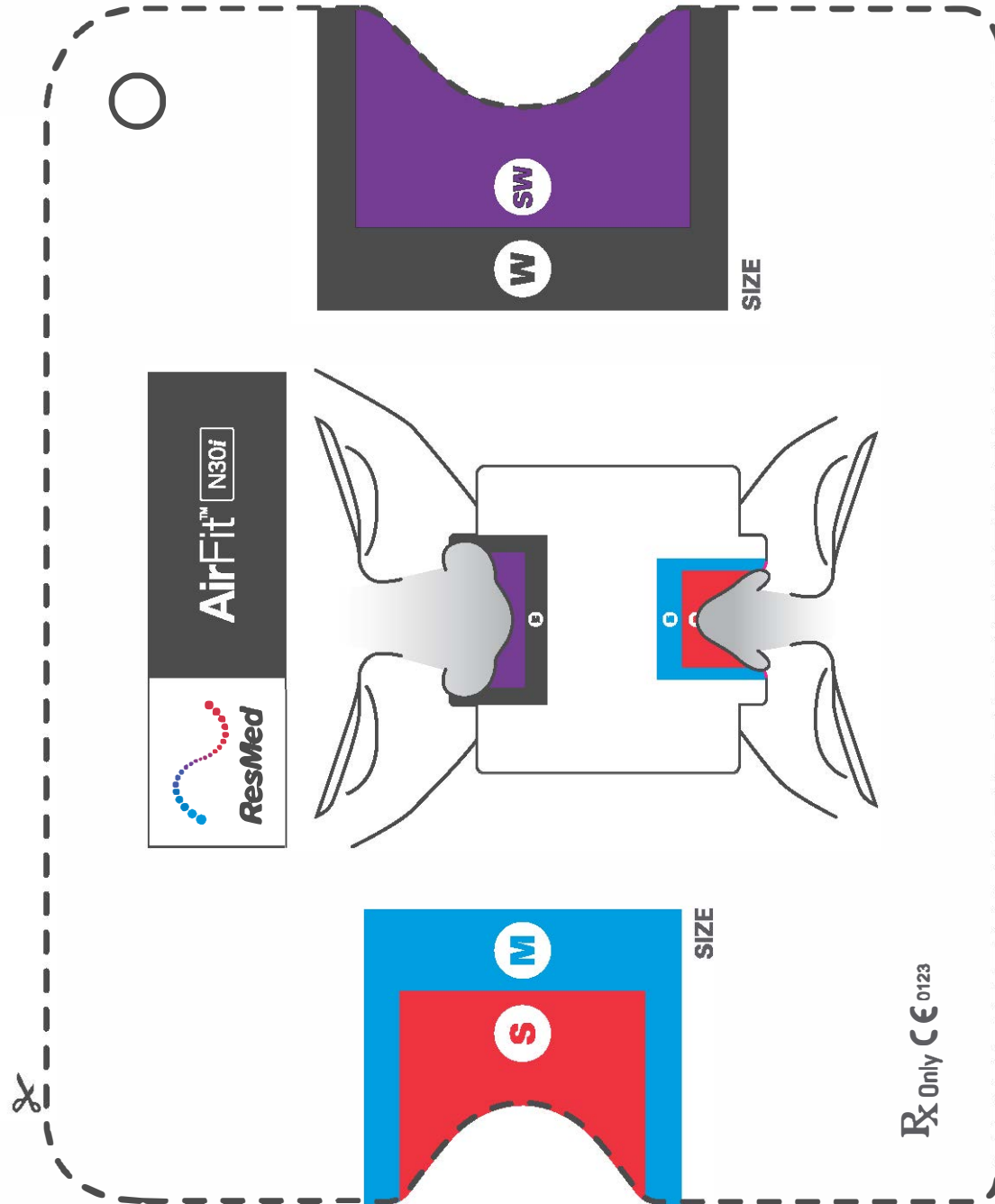
Ruler is for scaling purposes.

How to use the fitting template:

1. Please ensure the template is printed to scale
2. Cut out along dotted line
3. Refer to diagram on template to determine appropriate cushion size

**AirFit™ N30i**

Nasal cradle mask



Rx Only CE 0123

Sample size check

