

A Message From The SATURN Study Team

Happy Fall!

We want to thank all the sites for their work in getting SATURN off the ground and for all of the successful enrollments we've had. Keep the enrollments and the good work coming!



SATURN Milestones

There have been 20 enrollments in SATURN to date. We would like to send our congratulations to:

- **Oregon Health & Science University Hospital, Portland, OR (2)**
- **Harborview Medical Center, Seattle, WA (2)**
- UF Health Shands Hospital, Gainesville, FL
- Beth Israel Deaconess Medical Center, Boston, MA
- Greenville Hospital System, Greenville, SC
- Metro Health Hospital, Wyoming, MI
- Cedars-Sinai Medical Center, Los Angeles, CA
- WellSpan York Hospital, York, PA
- Cox Medical Center South, Springfield, MO
- St. Joseph's Hospital and Medical Center, Phoenix, AZ
- UPMC Presbyterian Hospital, Pittsburgh, PA
- McLaren Flint, Flint, MI
- Baylor College of Medicine Medical Center, Houston, TX
- Hartford Hospital, Hartford, CT
- Tufts Medical Center, Boston, MA
- Washington University School of Medicine St. Louis, Belleville, IL
- University of Alabama Hospital, Birmingham, AL
- SUNY Upstate Medical University, Syracuse, NY

Inside this issue

- Acknowledgements
- FAQs
- Helpful Tips
- Reminders
- Status Update



Frequently Asked Questions: *Shipping*

Q: *What needs to be done before shipping a sample?*

1. Fill out CRF 181.
This is the biospecimen collection form located in the subject CRF binder
2. Fill out the Lab Kit Tracking form
This form is located under the Project Management tab.
3. Print the Shipping Manifest by clicking the green arrow at the bottom of the lab kit tracking form
4. Put the shipping manifest into the lab kit box before shipping

After submission:, an automated e-mail will be sent to the MGH team who will confirm sample receipt upon delivery to the lab.

Frequently Asked Questions: *SATURN Blood Tube Replacement Instructions*

Q: *How are blood tubes replaced?*

1. Discard the expired tubes
2. Replace the expired tubes with pre-labeled tubes wrapped in bubble wrap
3. Adhere the spare ID sticker from the replacement kit to the Styrofoam tube holder/plastic shuttle, preferably near the old study ID sticker. (Do not remove the old sticker)



Frequently Asked Questions: *Screen Failure Log*

Q: What's the proper way to fill out Q04? I am not sure how to answer it.

Q04	Randomization can be carried out within 7 days of the onset of the qualifying ICH	<input type="radio"/> No	<input type="radio"/> Yes	<input type="radio"/> Unknown
-----	---	--------------------------	---------------------------	-------------------------------

For question Q04, this should only be answered **no, if and only if** a subject cannot be randomized within 7 days of the index event. Good reasons to enter no are:

- If a patient is on day 6 of their enrollment window and is being transferred from the site
- Enrollment is frozen at a site
- Patient can't be reached until they are near the end of their enrollment window

Frequently Asked Questions: *Exclusion Criteria*

Q: One of the exclusion criteria is Known diagnosis of severe dementia. What is considered severe dementia?

Severe dementia means stage 3 on the Clinical Dementia Rating Scale

- ◇ Severe memory problems (for example a patient cannot remember what they had for lunch or names of immediate family members),
- ◇ Disoriented with respect to time
- ◇ Cannot participate in any community activity,
- ◇ May not be able to communicate
- ◇ Requires help with all activities of daily living
- ◇ Incontinence



Helpful Tips: 5 Recruitment Strategies

1. Involve the clinical team
2. Approach the patient/family as early as possible.
3. Engage the patient & family with these steps:
 - Involve the clinical team
 - Approach the patient/family early (There is never a perfect time)
 - Engage the patient & family
 - Educate them before asking for consent
 - A clinician on the team should lead the discussion
 - Make them understand the problem
 - Highlight the controversy that we don't know if ischemic stroke/MI is better/worse than a recurrent ICH
 - Point out that they can use non-statin lipid lowering agents if needed
 - Take time to answer questions & make yourself available/accessible for follow-up questions
 - Give them time, then follow up
 - Work hard to establish rapport & to gain their trust.
4. Take the initiative and communicate with the subject's providers
5. Highlight the simplicity of the protocol and follow up



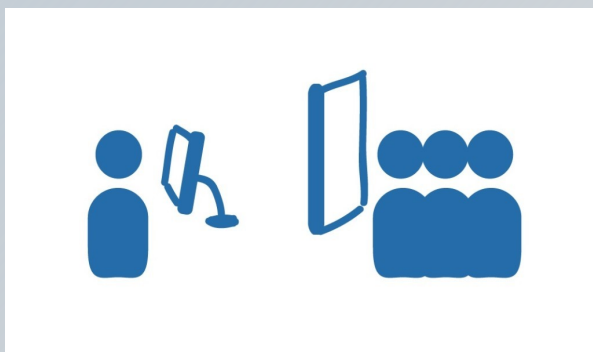
Reminders

Monthly Webinar

Please join us for our monthly SATURN PI/
coordinator webinar on the last Thursday of every
month at 12:30 PM.

Next Webinar: November 19, 2020

<https://nihstrokenet.adobeconnect.com/trials/>



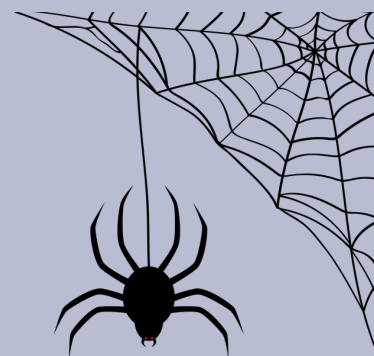
Got Questions?



E-Mail us at
SATURN@bidmc.harvard.edu


24/7 Clinical Hotline
For urgent questions


Call +1-617-667-7000 & ask
to page beeper #39636 re: the
SATURN Trial



SATURN Site Progress as of 10/29/2020					CTA execution / CIRB approval / Readiness CALL / Site RELEASED to enroll
	CTA	CIRB	CALL	REL	
Canadian Sites					Stanford
Enfant-Jesus Hospital					Stanford University Medical Center
Charles LeMoyne Hospital					El Camino Hospital, Mountain View Campus
London Health Sciences Center					Oregon Health & Science University Hospital
Ottawa Hospital					Mercy San Juan Medical Center
University of Alberta Hospital					U Chicago
University of Calgary - Foothills Campus					Froedtert Hospital
Toronto Western Hospital					Central DuPage Hospital
Health Sciences Centre					Loyola University Medical Center
Montreal Neurological Institute and Hospital					Rush University Medical Center
Hopital de Chicoutimi					U Cincinnati
Thunder Bay Regional Health Sciences Centre					University of Cincinnati Medical Center
Brandon Regional Health Center					University of Louisville Hospital
Hamilton General Hospital					OSU Wexner Medical Center
CIUSSS Hopital Fleurimont					U Iowa
Royal Columbian Hospital					University of Iowa Hospitals & Clinics
Case Western					University of Nebraska Medical Center
WVU Healthcare Ruby Memorial Hospital					Sanford Medical Center Fargo
MetroHealth Medical Center					U Miami
Spectrum Health Hospitals Butterworth Hospital					Tampa General Hospital
UH Cleveland Medical Center					UF Health Shands Hospital
Columbia					Mayo Clinic - Jacksonville
NYP Columbia University Medical Center					Jackson Memorial Hospital
NYP Weill Cornell Medical Center					U Michigan
NYP Brooklyn Methodist Hospital					University of Kentucky Hospital
Buffalo General Medical Center					Detroit Receiving Hospital
SUNY Upstate Medical University					University of Michigan University Hospital
St. Josephs Regional Medical Center					Mercy Health Saint Mary's
Mass General					McLaren Flint
Baystate Medical Center					Metro Health Hospital
Tufts Medical Center					U Minnesota
Massachusetts General Hospital					Regions Hospital
UMass Memorial Medical Center					University of Minnesota Medical Center Hospital
Brigham and Women's Hospital					United Hospital
Beth Israel Deaconess Medical Center					University of Kansas Hospital
Lahey Hospital & Medical Center					St. Cloud Hospital
Eastern Maine Medical Center					U Penn
The University of Vermont Medical Center					Abington Memorial Hospital
MedStar					Temple University Hospital
University of Maryland Medical Center					Hospital of the University of Pennsylvania
UVA Medical Center					WellSpan York Hospital

CTA execution / CIRB approval / Readiness CALL / Site REleased to enroll	CTA	CIRB	CALL	REL	CTA execution / CIRB approval / Readiness CALL / Site REleased to enroll	CTA	CIRB	CALL	REL
Mount Sinai					Thomas Jefferson University Hospital				
The Mount Sinai Hospital					Lehigh Valley Hospital				
NYU Langone Medical Center - Tisch Hospital					U Pitt				
Montefiore Medical Center					UPMC Presbyterian Hospital				
NYU Langone Hospital - Brooklyn					U Utah				
MUSC					Swedish Medical Center				
Augusta University Medical Center					University of Utah Healthcare				
Greenville Hospital System					Intermountain Medical Center				
Moses H. Cone Memorial Hospital					St. Mary's Medical Center				
Non Network					U Washington				
Johns Hopkins Bayview Medical Center					Legacy Emanuel Medical Center				
University of North Carolina Medical Center					PeaceHealth Sacred Heart Medical RiverBend				
UTHSC Houston					Harborview Medical Center				
St. David's Medical Center					Overlake Hospital Medical Center				
Baylor College of Medicine Medical Center					U Wisconsin				
OU Medical Center					Aurora St. Luke's Medical Center				
St. Luke's Baptist Hospital					University of Wisconsin University Hospital				
University Medical Center of El Paso					Aurora BayCare Medical Center				
Wake Forest					UAB				
Wake Forest Baptist Medical Center					University of Alabama Hospital				
Forsyth Medical Center					University of South Alabama University Hospital				
Washington University					UCLA				
Saint Luke's Hospital of Kansas City					Kaiser Permanente Los Angeles Medical Center				
OSF St. Francis Medical Center					University of New Mexico Hospital				
UAMS Medical Center					Long Beach Memorial Medical Center				
Barnes Jewish Hospital					Cedars-Sinai Medical Center				
Cox Medical Center South					UC Irvine Medical Center				
Yale					Kaiser Permanente Fontana Medical Center				
Hartford Hospital					Arrowhead Regional Medical Center				
Rhode Island Hospital					UCSD				
Yale New Haven Hospital					St. Joseph's Hospital and Medical Center				
North Shore University Hospital					UCSD Medical Center - Hillcrest Hospital				
					Ochsner Medical Center - Main Campus				
					Scripps Memorial Hospital La Jolla				
					UCSF				
					San Francisco General Hospital				
					UCSF Medical Center				
					Eden Medical Center				

Completed 

Scheduled 

Pending 