



## New Video Resources

- **IF YOU ARE USING A MEGA-TMS MACHINE WATCHING THE FOLLOWING VIDEO IS ESSENTIAL.** It details how to change how the traces are viewed on the screen which is essential to be able to do for difficult MEP status determinations: [MEGA-TMS Trace Viewing Options](#)
- **A new 1 minute video demonstrating instructions for bilateral facilitation** and how to stimulate during it: [Bilateral facilitation 2](#)
- **5 new videos demonstrating coil positioning and movement** that are aimed at people new to TMS with little practice experience:
  - [Coil orientation](#)
  - [Coil flush against scalp](#)
  - [Systematic coil positioning](#)
  - [Coil movement: anterior and posterior](#)
  - [Coil movement: medial and lateral](#)

## MEP status determination

- The MEP status determination entered on WebDCU for patients is final and cannot be changed afterwards

## Practical TMS Refresher

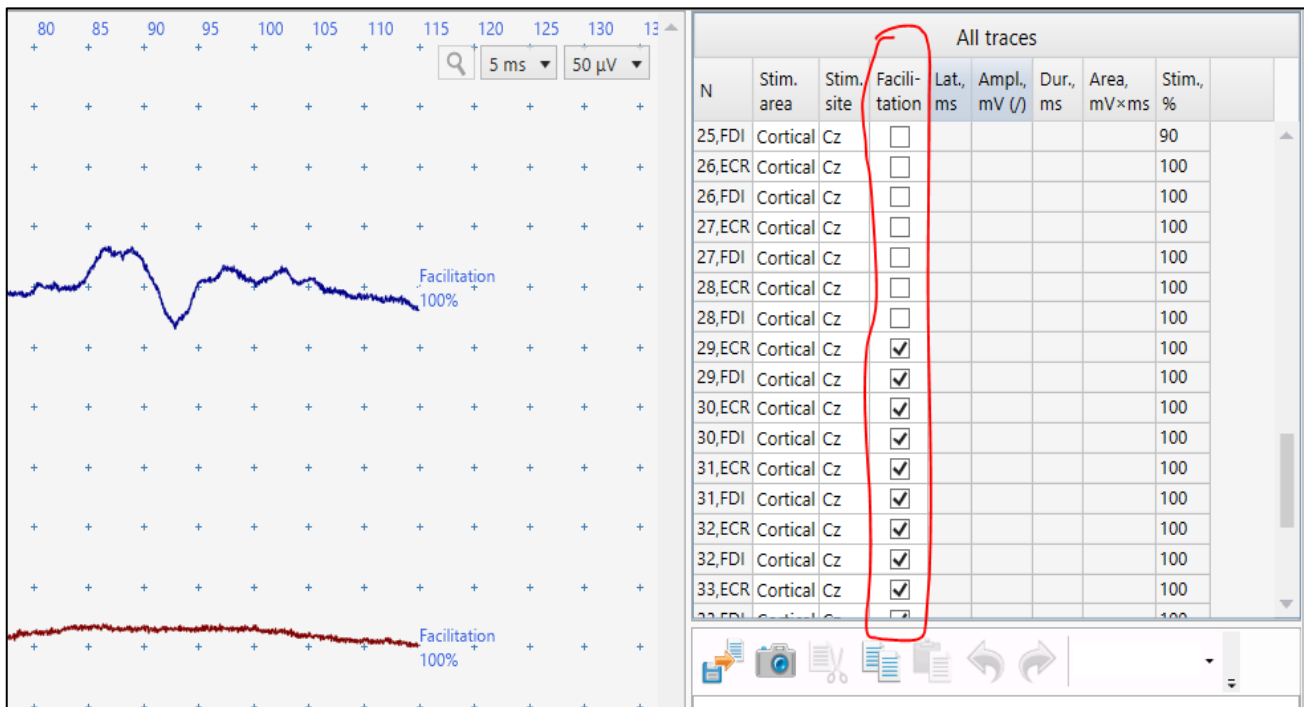
- All TMSOs who have not performed the VERIFY TMS protocol with a healthy volunteer or stroke patient in the past 4 months need to collect a healthy volunteer dataset and upload it to REDCap to ensure protocol knowledge is up-to-date.
- TMSOs who need to upload a dataset will be contacted by the VERIFY team via email.

## Systemic coil positioning

- Please remember one of the requirements to call a patient MEP- is systemic coil positioning which means **at least 5 different scalp positions need to be stimulated.**
- We have received numerous MEP- datasets with fewer than 5 stimulations at 100% during bilateral facilitation. **MEP- datasets with fewer than 5 stimulations at 100% during bilateral facilitation will be deemed unusable.**

## Bilateral facilitation

- Please note in the TMS software or WebDCU comment section which stimulations in a dataset were done during bilateral facilitation. This will save the TMS core needing to email you to ask which stimulations involved bilateral facilitation.
- For MEGA-TMS software there is a column on the right to mark frames with facilitation



## Protocol reminders

- Point 8b. Once you elicit a possible MEP you should record 9 stimulations in the same coil position. This is to give a high number of traces to review before ending the session.
- When a patient performs bilateral facilitation you should stimulate **during** the facilitation, not after the facilitation.
- You are expected to print out and complete the TMS source document by hand during sessions with VERIFY patients. The first page of the source document includes a shortened protocol including definitions for MEP+ and MEP-.

## Misc reminders

- Leave comments on the Form 510 comment box on WebDCU if you did anything noteworthy in the TMS session such as whether you tried to troubleshoot noise, why you skipped intensities straight to 100%, what stimulations were done during bilateral facilitation, or why the protocol was deviated away from.

### Urgent assistance or advice needed during a TMS session?

Call/text the TMS hotline at (833)337-2227 (Mon-Fri 8am-9pm ET)

Please email [verify.study.tms@gmail.com](mailto:verify.study.tms@gmail.com) if you have questions about this newsletter or TMS in general.