

# The VERIFY STUDY

Validation of Early Prognostic Data for Recovery  
Outcome after Stroke for Future, Higher Yield Trials

Newsletter September 2022 Issue 9

## Enrollment Updates

**Medstar Washington Hospital:** 1 participant

**Emory University:** 3 participant

**UT Memorial Hermann:** 3 participants

## Sites Released to Enroll

- University of Cincinnati
- Emory University
- Medstar Washington Hospital Center
- UT Memorial Hermann
- University of Michigan
- Medical University of South Carolina
- University of Utah
- Duke University



"Special thanks to Emory and UT-Houston for giving us a kickstart by enrolling **3 patients each** in just the first month of activation!! And thanks to all of our sites for pushing the study forward. It is really great to see our recovery stroke community in action!"

-Pooja Khatri, MD, MSc

## Payment Schedule

- Rather than sending separate payments to compensate the healthy volunteers, we have instead included these funds in the site startup payment. Thus, the site startup payment has been increased from \$8250 to \$9250.
- This continues to allow for compensation of a healthy volunteer at \$25 per TMS training session for up to 4 sessions per volunteer (maximum \$100), and up to 40 training sessions per site (\$1000) towards healthy volunteer training.
- However, it will eliminate some added invoicing and tracking effort for our coordinators. Furthermore, if funds are not fully utilized for Healthy Volunteer training, they may be rebudgeted for other VERIFY start-up expenses.

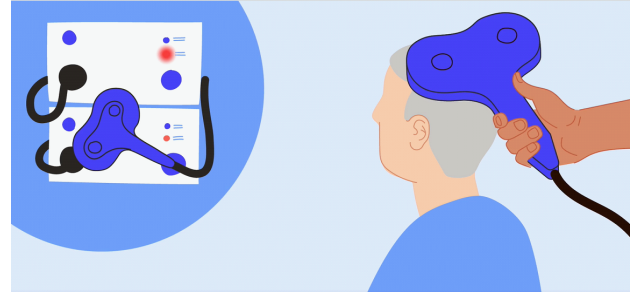
## Webinars

- PI webinars occur on the 3rd Monday of each month, 4pm-5pm ET.
- CRC webinars occur on the 4th Tuesday of each month, 12pm-1pm ET.
- Weekly drop-in TMS help sessions are also available as detailed below.

**\*Zoom meeting series have been sent to all sites for the PI webinars, CRC webinars & drop-in TMS sessions\***

## TMS Reminders

- We recommend that TMS operators complete 1 healthy volunteer TMS session & wait for feedback before proceeding with the next healthy volunteer TMS session. This way, TMS operators can incorporate feedback and make corrections before performing their next healthy volunteer TMS session.
- We also recommend re-reading the “7. TMS Source Document” and “8. Practical TMS Training with Healthy Volunteers” pages on the TMS training website before starting practical training with healthy volunteers.
  - TMS training website: <https://verifytraining.blogs.auckland.ac.nz/>
- Sites should maintain their completed healthy volunteer source documentation (e.g., TMS Safety Checklist) in a binder onsite



## Optional Drop-In TMS Sessions

- Occurs weekly on Tuesdays 4-5pm ET. Zoom meeting series have been emailed to sites.
- Purpose is to address questions related to TMS procedure and equipment.
- These sessions are optional. Feel free to drop-in at any session
- A member of our core TMS team will be available to answer questions.



## Practical TMS Training with Healthy Volunteers

### **Standard Track Sites**

- Each TMS operator needs to upload 5 healthy volunteer datasets that will be quality checked by the VERIFY team.
- This number could potentially be reduced by the TMS team if deemed appropriate!
- The same healthy volunteer can be assessed on different days for separate datasets, but you must submit data from at least 2 and preferably 3 unique healthy volunteers.

### **Fast Track Sites**

- Each TMS operator needs to upload 2 healthy volunteer datasets that will be quality checked by the VERIFY team.
- These datasets should come from 2 unique healthy volunteers.

## Study Contacts

### CI RB- Regulatory contacts:

Betsy Casillo           betsy.casillo@advarra.com           513.619.1679  
 Kalli Beasley           beasleki@ucmail.uc.edu           707.372.6241

### CTA contacts:

Sasha Simms           simmssc@ucmail.uc.edu           513.558.3924

**All Other VERIFY questions:** Lisa Mundo mundokl@ucmail.uc.edu

**Email QUESTIONS to: [verifystudy@ucmail.uc.edu](mailto:verifystudy@ucmail.uc.edu)**

### Race to Activation- Enrollment Tracker

Site Name	CTA Executed	CI RB Approved	DOA Approved	Investigator agreement form's uploaded	TMS Shipping Address entered	TMS Machine obtained	TMS online training Completed	Greenlight to start TMS HV Training	Uploaded TMS HV data to RedCAP	TMS HV Training Completed for at least 1 TMSO	TMS Technique Check	MRI Phantom Approved	All WebDCU Documents uploaded	Site Activation Meeting Completed	Site Activated	July Enrollment	August Enrollment	September Enrollment
Emory University																0	3	0
UT-Memorial Hermann Texas Medical Center																0	3	0
MedStar Washington Hospital Center																1	0	0
University of Cincinnati Medical Center																0	0	0
University of Michigan University Hospital																0	0	0
Medical University of South Carolina (MUSC)																0	0	0
The University of Utah																0	0	0
Duke University Hospital																0	0	0
NYU Langone Medical Center - Tisch Hospital																0	0	0
UPMC Presbyterian Hospital																0	0	0
University of Wisconsin University Hospital																0	0	0
LVA Medical Center																0	0	0
Montefiore Medical Center																0	0	0
University of Alabama Hospital																0	0	0
Baystate Medical Center																0	0	0
University of Maryland Medical Center																0	0	0
Massachusetts General Hospital																0	0	0
UCSF Medical Center																0	0	0
University of Texas Southwestern Medical Center																0	0	0
Lahey Hospital & Medical Center																0	0	0
OSU Wexner Medical Center																0	0	0
Ronald Reagan UCLA Medical Center																0	0	0
San Francisco General Hospital																0	0	0
Harborview Medical Center																0	0	0
University of Iowa Hospitals & Clinics																0	0	0
Houston Methodist Hospital																0	0	0
Penn State Hershey Medical Center																0	0	0
Pennsylvania Hospital																0	0	0
University of Rochester																0	0	0
Prisma Health Richland Hospital																0	0	0