

Introduction

This instruction manual explains how to install the KOEO Interactive Tool (KIT). This tool is to be installed on the desktop of the local computer that will configure and upload T3 Sleep Apnea Test Studies as part of Sleep SMART.

It is recommended to use **Google Chrome** for all sites and users

KOEO Support Phone Number

404-480-5149 extension 4006

KOEO Support E-mail

sleepsmarttechsupport@noxhealth.com

The KOEO Interactive Tool is an application to help with the management of T3 device from Nox Medical (noxmedical.com) and upload of sleep studies.

The main functions of KIT are as follows:

- Set up a T3 device
- Upload sleep test data from a T3 device

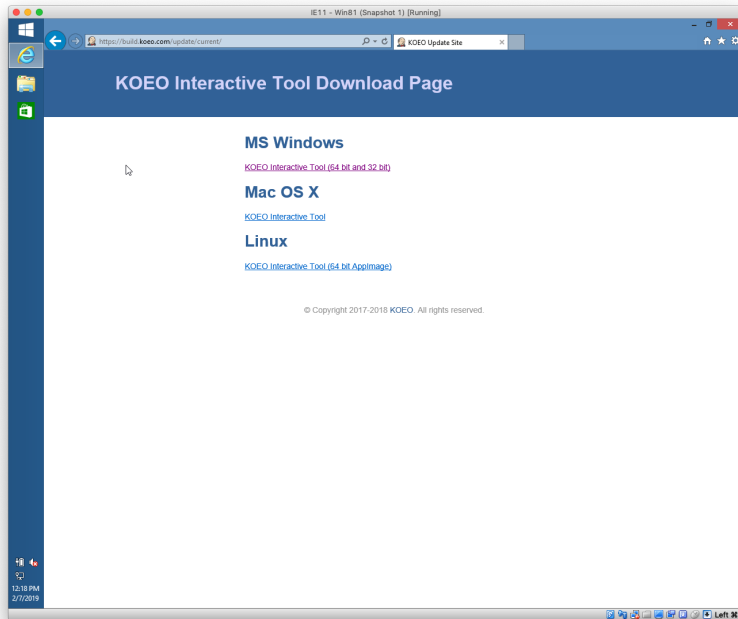
All these operations require unrestricted access to the local file system, that cannot be obtained inside a browser-only application. That is why the KIT application is a stand-alone desktop application available for Apple OS X, MS Windows, and Linux.

Installation

Using **Google Chrome**, the KIT application can be downloaded from the KIT Update site at: <https://build.koeo.com/update/current/> The application automatically checks for a new version every time it starts. If it finds a newer version it will attempt to update itself.

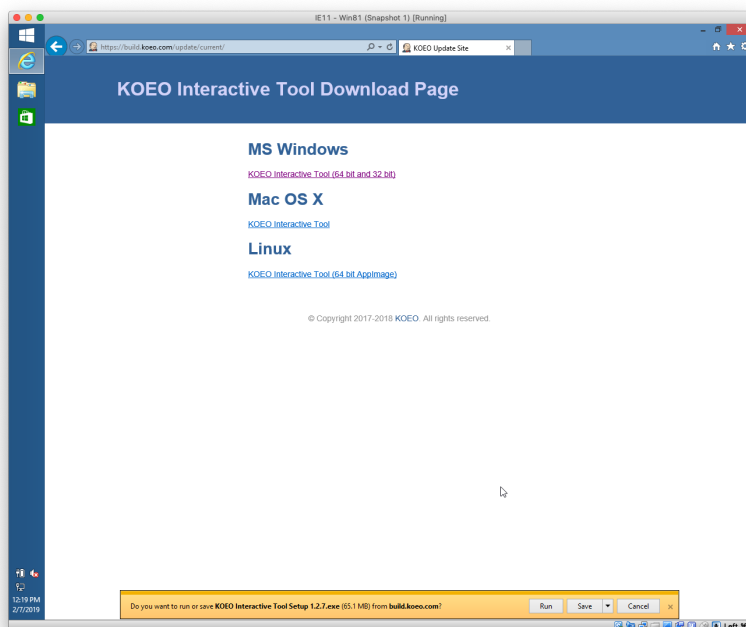
Go to the KOEO Interactive Tool Download Page.

KOEO Interactive Tool Download Page



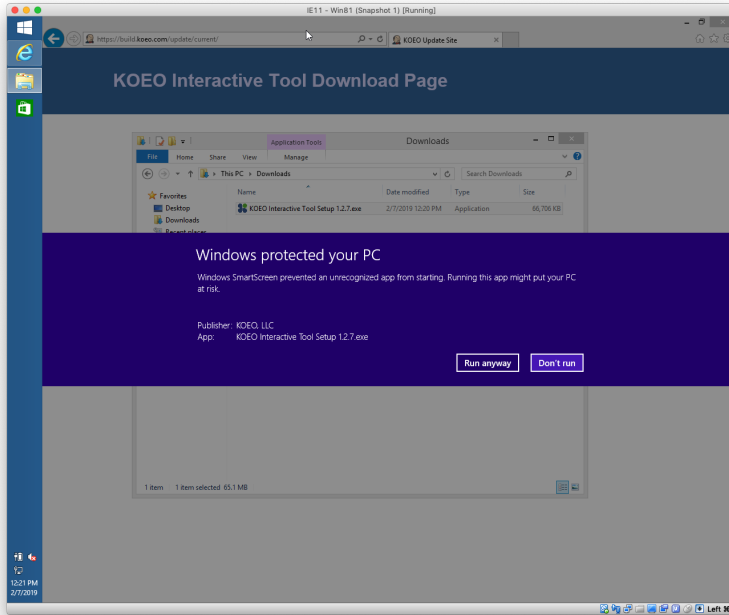
For MS Windows operating systems, click on the link for KOEO Interactive Tool (64 bit and 32 bit).

You will be asked if you want to run or save KOEO Interactive Tool



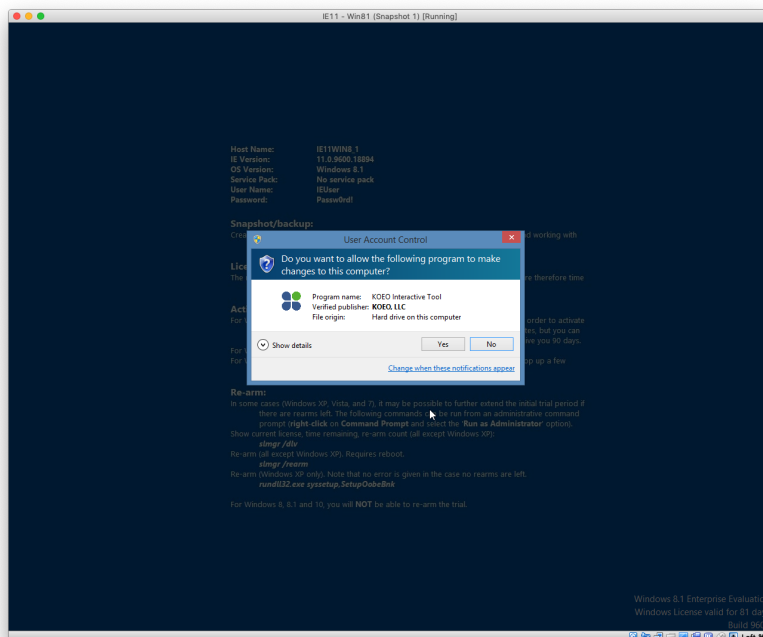
To install, click on **RUN**

Windows Protection



Should a Windows Protected your PC notification appear, click on **Run Anyway**.

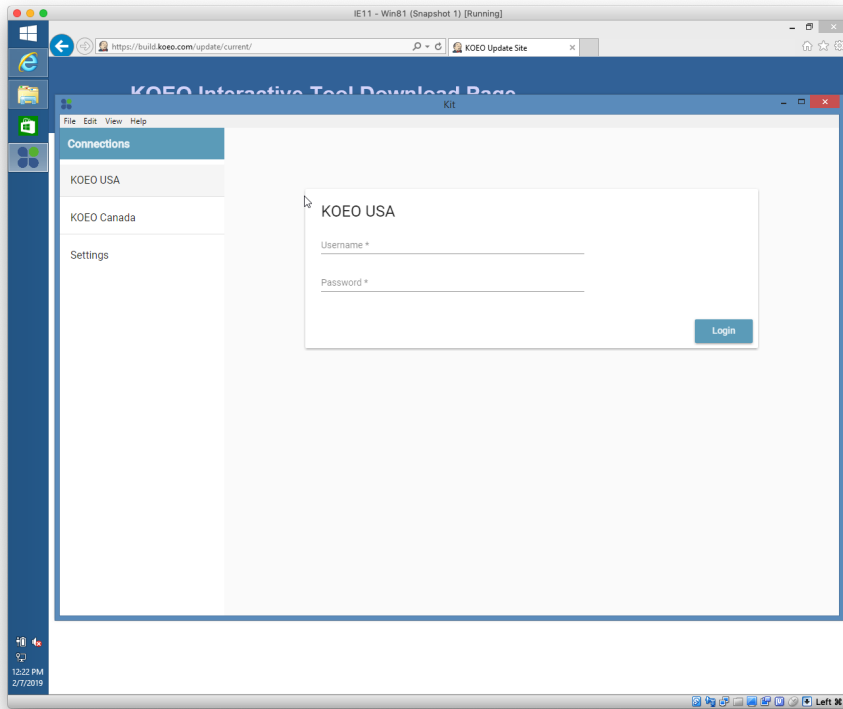
User Account Control



Accept the User Account Controls by clicking **YES**.

An Icon will be created on the desktop of the computer. Double-clicking on the icon will launch the KOEO Interactive Tool or KIT. You will need a username and password to access KIT functionality.

KOEO Interactive Tool on the desktop of the PC



Contact KOEO Support or FusionHealth for username and password information.

KOEO Support Phone Number

404-480-5149 extension 4006

KOEO Support E-mail

sleepsmarttechsupport@noxhealth.com